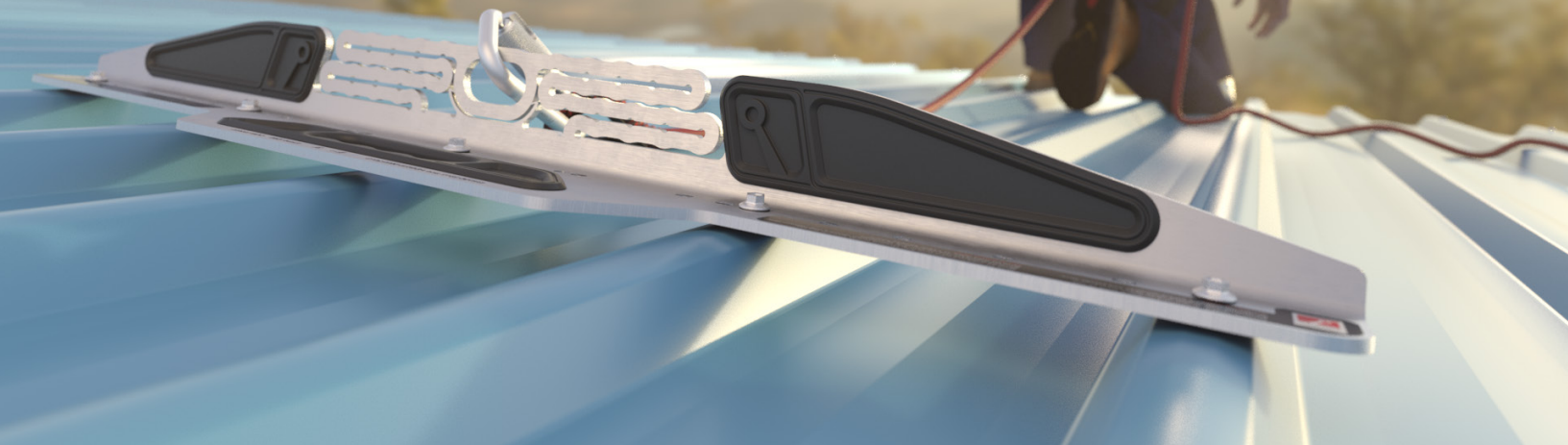




SafetyLink®

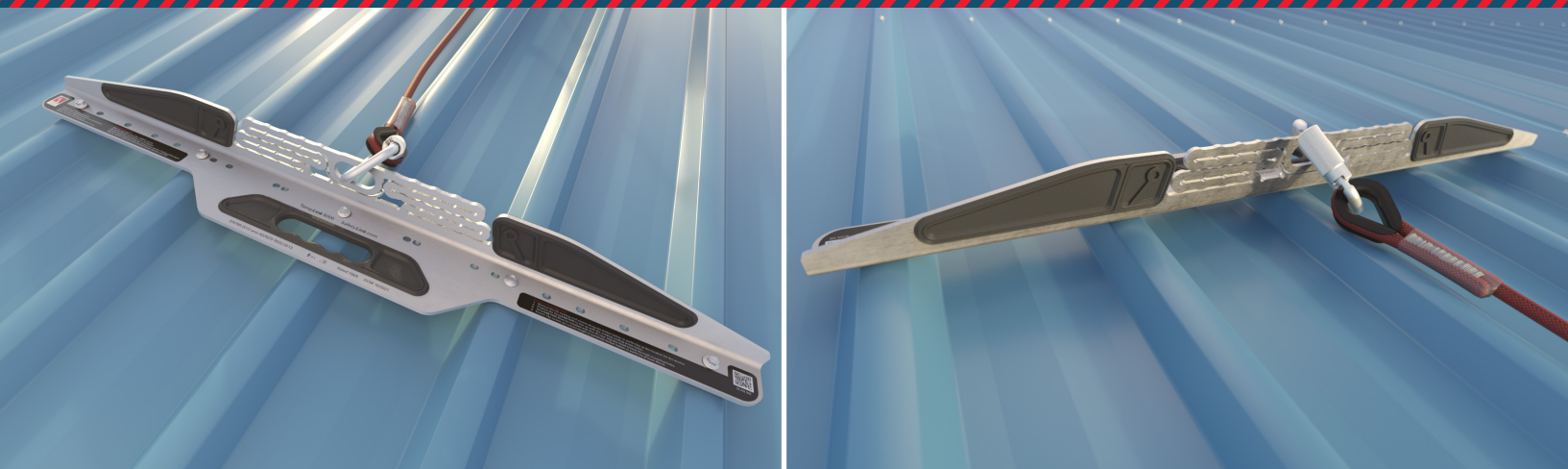
Innovative
Fall Protection



TEMPLINK 5000

SafetyLink's *NEW* Patented Temporary Roof Anchor

COMPLIES WITH CURRENT AS/NZS 5532 STANDARD



SafetyLink®

Innovative
Fall Protection

Available from



*'Innovative
Fall Protection'*



SafetyLink®

*Innovative
Fall Protection*

SafetyLink's new patented TempLink 5000 temporary anchor not only provides you with a certified anchor to AS/NZS 5532, but also an anchor that gives you the confidence you need when working at heights. The anchor's patented energy absorbing feature gives you the ability to work in multiple directions while working on a range of different roof types.

- ❑ Multi directional 316 stainless steel.
- ❑ Easy grip handle.
- ❑ Fast, compact, portable, lightweight and relocatable.
- ❑ Less fixings required due to energy absorbing features.
- ❑ Single person temporary roof anchor.
- ❑ Rated at 15kN.
- ❑ Complies with AS/NZ5532:2013 and EN759:2012.

Benefits of choosing SafetyLink:

SafetyLink's unique designed roof anchors provide fall protection for residential, commercial and industrial buildings. Our roof anchors have patented designs which absorb energy, which means if in the event of a fall the anchor absorbs energy therefore reducing risk of injury to the person and damage to the structure.

SafetyLink's designs represent a perfect engineered solution for working at heights and roof safety fall protection.

- ❑ Easy to install.
- ❑ One person temporary roof anchor.
- ❑ Detailed, easy to read installation instructions.
- ❑ Free technical advice regarding installation and use.

The TempLink 5000 is a multi-directional roof anchor. A fall is never an anticipated event therefore the direction of your fall cannot be accurately predicted. The TempLink 5000 is designed and tested as a multi-directional anchor.

SafetyLink will provide you with the following:

- ❑ All products tested and manufactured to current standards.
- ❑ All distributors and installers are trained to use SafetyLink products.
- ❑ Supply installation guides, testing results and product sheets.
- ❑ Layout Design Service providing compliant roof safety systems.
- ❑ Supply a large range of roof anchors that protect you from the ground up, allowing complete access to your roof.
- ❑ Installers are qualified to do yearly inspections on your anchors as per current Standards.



SafetyLink®
*Innovative
Fall Protection*

Available from



FS 707792